



ACOUSTICAL SOLUTIONS

PRODUCT GUIDE

www.grabberpro.com



TABLE OF CONTENTS

ACOUSTICAL EYE-LAG SCREWS 4

Coarse Thread Eye-Lags for Attaching to Wood	4
Self-Piercing Steel Deck Eye-Lags	4
Self-Drilling Steel Deck Eye-Lags	5

ACOUSTICAL LAG DRIVERS 6

Lag Driver	6
Lag Pole	6

ACOUSTICAL HANGERS 6

Two Hole Angle Bracket	6
Angle Clip and Pin Assembly	7
Pre-tied Angle Clip & Pin Assembly	7
Vertical Flange Hanger	8
Angle Flange Hanger	8
Beam Clip Hanger	8

ACOUSTICAL WIRE 9

Straight Cut Wire	9
-------------------	---

SPRING STEEL HANGERS 10

Beam Clip Hangers	10
-------------------	----

SELF-SEATING ACOUSTICAL TOGGLE 10

SpringShot™ Acoustical Toggle Bolt	10
------------------------------------	----

WEDGE ANCHORS 11

Tie Wire Wedge Anchor	11
-----------------------	----

ACOUSTICAL TOOLS AND PRODUCTS 12

Bright Tension Pins	12
Fence Staples	12
Grid Match™ Rivets	12
Rivet Drill Bit	12
Klick-Fast Riveter	13
Sur-Punch® 45° Grid Punch Pliers	13
1/8" Grid Punch Pliers	13
Leaver Action Ceiling Clamps	14
Heavy Duty Spring Clamps	14
Fastline Ceiling Grid Alignment Line	14
Utility Knife and Premium Blades	14

ACOUSTICAL INSTALLATION PRODUCTIVITY TOOLS 15

Arrow™ RevealCut™ Ceiling Tile Cutting Workstations	15
---	----

THE RAMSET® VIPER 4 16

The Ramset® Viper4 .27 Caliber Strip Powder Tool	16
--	----

SCAFFOLDING 17

Contractor-Grade Scaffolding	17
Mini Scaffold with 5" Locking Casters	18

SAW HORSES 18

Fold N Go	18
-----------	----

PRECISION LASERS 19

20V Max Green Rotary Tough Laser	19
12V Beam Battery, Green Laser	19

GRABBER® GAS TRACK SYSTEMS 20

GTT150 Track Tool	20
GTT150HD Track Tool	20
GTT Pins	21
Lath Magnetic Adapters and Washers	21
Fuel Cell	21

RAMSET® ELECTRONIC FUEL SYSTEM 22

Ramset® T4MAG	22
T4MAG (Common Fasteners)	22
Ramset® Trakfast	22
TF1200 (Common Fasteners)	22

TILT TRUCKS 23

SPECIFICATIONS AND DATA 24

Coatings and Finishes	
-----------------------	--

GRABBER BRANCH LOCATIONS 25

REFERENCES AND ASSOCIATED STANDARDS 26

ABOUT GRABBER

As a leading distributor of quality products built for hardworking construction professionals, Grabber® Construction Products are 100% reliable and durable – because we don't believe in slowing you down with cut-rate tools. For more than 55 years, each Grabber product has been manufactured with our high standards of quality, efficiency, and value.

Grabber fasteners are known as the best in the industry and can be trusted for a variety of wood, metal, and drywall applications. You'll also find the Grabber level of excellence in other product lines for the commercial and residential construction industries, including proprietary construction equipment, drywall tools and materials, power drives, adhesives, and accessories. Get the job done faster and better with Grabber. Find products at your local dealer or contact one of our reps to find a dealer near you.

GRABBER
CONSTRUCTION PRODUCTS



ACOUSTICAL EYE-LAG SCREWS

COARSE THREAD EYE-LAGS



- Secure fastening into wood for hanger wire attachment.
- Type 17 point.

Coating: Yellow Zinc



WARNING: This product can expose you to chemicals including hexavalent chromium, which is known to the State of California to cause cancer and birth defects or other reproductive harm. For more information, go to www.P65Warnings.ca.gov.

SIZE	PART NO.	PKG QTY	DESCRIPTION
1/4 X 3	AL300	BULK BX - 1,000	ACOUSTICAL EYE LAG, YELLOW ZINC, TYPE 17 POINT
1/4 X 4	AL400	BULK BX - 1,000	ACOUSTICAL EYE LAG, YELLOW ZINC, TYPE 17 POINT
1/4 X 5	AL500	BULK BX - 1,000	ACOUSTICAL EYE LAG, YELLOW ZINC, TYPE 17 POINT
1/4 X 6	AL600	BULK BX - 500	ACOUSTICAL EYE LAG, YELLOW ZINC, TYPE 17 POINT
5/16 X 3-1/2	AL312	BULK BX - 1,000	ACOUSTICAL EYE LAG, YELLOW ZINC, TYPE 17 POINT
1/4 X 3	AL300CP	CT PACK - 100	ACOUSTICAL EYE LAG, YELLOW ZINC, TYPE 17 POINT, 10 PACKS EACH CASE
1/4 X 4	AL400CP	CT PACK - 100	ACOUSTICAL EYE LAG, YELLOW ZINC, TYPE 17 POINT, 10 PACKS EACH CASE
1/4 X 5	AL500CP	CT PACK - 100	ACOUSTICAL EYE LAG, YELLOW ZINC, TYPE 17 POINT, 10 PACKS EACH CASE
5/16 X 3-1/2	AL312CP	CT PACK - 100	ACOUSTICAL EYE LAG, YELLOW ZINC, TYPE 17 POINT, 10 PACKS EACH CASE



- Secure fastening into wood for hangerwire attachment.

Coating: Clear Zinc



WARNING: This product can expose you to chemicals including hexavalent chromium, which is known to the State of California to cause cancer and birth defects or other reproductive harm. For more information, go to www.P65Warnings.ca.gov.

SIZE	PART NO.	PKG QTY	DESCRIPTION
1/4 X 3	3ELZ	BULK BX - 1,000	ACOUSTICAL EYE LAG, CLEAR ZINC
1/4 X 4	4ELZ	BULK BX - 1,000	ACOUSTICAL EYE LAG, CLEAR ZINC
1/4 X 5	5ELZ	BULK BX - 1,000	ACOUSTICAL EYE LAG, CLEAR ZINC
1/4 X 3	3ELCZ	CT PACK - 100	ACOUSTICAL EYE LAG, CLEAR ZINC, 10 PACKS EACH CASE

COARSE THREAD STEEL DECK EYE-LAGS



- Secure fastening into light gauge steel for hanger wire attachment. Self-piercing sharp point. Installed with driver or pole tool.

Coating: Yellow Zinc



WARNING: This product can expose you to chemicals including hexavalent chromium, which is known to the State of California to cause cancer and birth defects or other reproductive harm. For more information, go to www.P65Warnings.ca.gov.

SIZE	PART NO.	PKG QTY	DESCRIPTION
1/4 X 2-3/4	H-3	BULK BX - 1,000	ACOUSTICAL EYE LAG, YELLOW ZINC
1/4 X 2-3/4	VH-3	PACK - 5 lb	ACOUSTICAL EYE LAG, YELLOW ZINC

STEEL DECK EYE-LAGS



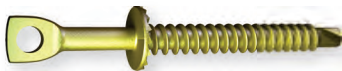
- Secure fastening into heavy gauge steel for hanger wire attachment. Self-drilling pinch point. Installed with driver or pole tool.

Coating: Yellow Zinc



WARNING: This product can expose you to chemicals including hexavalent chromium, which is known to the State of California to cause cancer and birth defects or other reproductive harm. For more information, go to www.P65Warnings.ca.gov.

SIZE	PART NO.	PKG QTY	DESCRIPTION
1/4 X 2-7/8	H-4	BULK BX -1,000	1-1/2" EFF, ACOUSTICAL EYE LAG, YELLOW ZINC, PINCH POINT
1/4 X 2-7/8	VH-4	PACK - 5 lb	1-1/2" EFF, ACOUSTICAL EYE LAG, YELLOW ZINC, PINCH POINT



- Secure fastening into heavy gauge steel for hanger wire attachment. Self-drilling point. Installed with driver or pole tool.

Coating: Yellow Zinc



WARNING: This product can expose you to chemicals including hexavalent chromium, which is known to the State of California to cause cancer and birth defects or other reproductive harm. For more information, go to www.P65Warnings.ca.gov.

SIZE	PART NO.	PKG QTY	DESCRIPTION
1/4 X 3	H-1	BULK BX -1,000	1-3/4" EFF, ACOUSTICAL EYE LAG, YELLOW ZINC, DRILL POINT
1/4 X 3	VH-1	PACK - 5 lb	1-3/4" EFF, ACOUSTICAL EYE LAG, YELLOW ZINC, DRILL POINT



- Secure fastening into heavy gauge steel for hanger wire attachment. Self-drilling point. Installed with 1/4" lag driver or pole tool.

Coating: Yellow Zinc



WARNING: This product can expose you to chemicals including hexavalent chromium, which is known to the State of California to cause cancer and birth defects or other reproductive harm. For more information, go to www.P65Warnings.ca.gov.

SIZE	PART NO.	PKG QTY	DESCRIPTION
1/4 X 2	JS1	BULK BX -1,000	3/4" EFF, ACOUSTICAL EYE LAG, YELLOW ZINC, SELF DRILLING
1/4 X 2	VJS1	PACK - 5 lb	3/4" EFF, ACOUSTICAL EYE LAG, YELLOW ZINC, SELF DRILLING



- Secure fastening into heavy gauge steel for hanger wire attachment. Self-drilling point. Installed with 1/4" lag driver or pole tool.

Coating: Clear Zinc



WARNING: This product can expose you to chemicals including hexavalent chromium, which is known to the State of California to cause cancer and birth defects or other reproductive harm. For more information, go to www.P65Warnings.ca.gov.

SIZE	PART NO.	PKG QTY	DESCRIPTION
1/4 X 2	H-2	BULK BX -1,000	3/4" EFF, ACOUSTICAL EYE LAG, CLEAR ZINC, SELF DRILLING
1/4 X 2	VH-2	PACK - 5 lb	3/4" EFF, ACOUSTICAL EYE LAG, CLEAR ZINC, SELF DRILLING



ACOUSTICAL LAG DRIVERS

LAG DRIVER



- Professional quality hex shanked lag driver for positive chucking.
- Collared and chamfered for precise lag alignment.

PART NO.	DESCRIPTION
ALD14	1/4" HEX SHANK EYE LAG DRIVER
ALD516	5/16" HEX SHANK EYE LAG DRIVER

LAG POLE

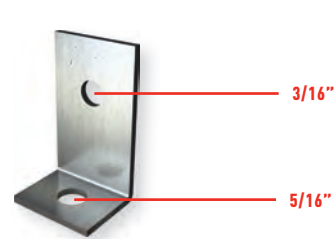


- Installs I-Lag screws from ground level without the need for ladders, scaffolding, or scissor lifts. Black anodized aircraft quality aluminum. Designed for standard 12 gauge wire, but will work with up to 8 gauge.
- Telescoping extension allows for fast, easy installation from floor.

PART NO.	DESCRIPTION
LM12	EYE LAG POLE, 4' - 12'
LM 18	EYE LAG POLE, 6' - 18'
LM24	EYE LAG POLE, 12' - 24'

ACOUSTICAL HANGERS

TWO HOLE ANGLE BRACKET



- Zinc plated steel. Ten—100 count boxes per master carton.

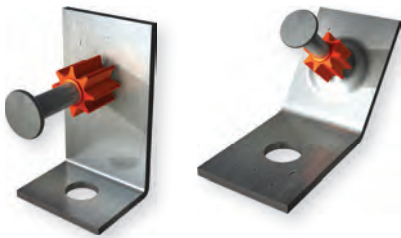
WARNING: This product can expose you to chemicals including hexavalent chromium, which is known to the State of California to cause cancer and birth defects or other reproductive harm. For more information, go to www.P65Warnings.ca.gov.

PART NO.	PKG QTY	DESCRIPTION
A2H	1000-pcs	2 HOLE ANGLE CLIPS - 3/16" X 5/16" HOLE SIZES
A2HCP (count pack)	100-pcs	2 HOLE ANGLE CLIPS - 3/16" X 5/16" HOLE SIZES



ACOUSTICAL HANGERS

ANGLE CLIP & PIN ASSEMBLY



- Angle clip & pin assembly for use with powder actuated tools.
- Available in bulk or count packs.

PART NO.	PKG QTY	DESCRIPTION
SPC78	100-pcs	7/8" POWER POINT CLIP & PIN ASSEMBLY
SPC114	100	1-1/4" POWER POINT CLIP & PIN ASSEMBLY

PRE-TIED ANGLE CLIP & PIN ASSEMBLY



- Pre-tied 12ga. soft galvanized wire with 1" clip and pin assembly. 100 per bundle. Available in 4', 6' 8' and 12' lengths.
- Special ties and longer lengths available.
- Check with your Grabber location to confirm size availability.

PART NO.	PKG QTY	DESCRIPTION
DHW1204P100	100 (per bundle)	1" PIN & CLIP ASSEMBLY WITH 4' GALVANIZED WIRE
DHW1206P100	100 (per bundle)	1" PIN & CLIP ASSEMBLY WITH 6' GALVANIZED WIRE
DHW1208P100	100 (per bundle)	1" PIN & CLIP ASSEMBLY WITH 8' GALVANIZED WIRE
DHW1212P100	100 (per bundle)	1" PIN & CLIP ASSEMBLY WITH 12' GALVANIZED WIRE
DHW1204P78	100 (per bundle)	7/8" PIN & CLIP ASSEMBLY WITH 4' GAL WIRE POWER POINT PIN & CLIP
DHW1206P78	100 (per bundle)	7/8" PIN & CLIP ASSEMBLY WITH 6' GAL WIRE POWER POINT PIN & CLIP
DHW1208P78	100 (per bundle)	7/8" PIN & CLIP ASSEMBLY WITH 8' GAL WIRE POWER POINT PIN & CLIP
DHW1212P78	100 (per bundle)	7/8" PIN & CLIP ASSEMBLY WITH 12' GAL WIRE POWER POINT PIN & CLIP
DHW1206P114	100 (per bundle)	6' X 12GA WIRE WITH SPC114 POWER POINT PIN & CLIP
DHW1204P	100 (per bundle)	1-1/4" PIN & CLIP ASSEMBLY WITH 4' GALVANIZED WIRE
DHW1206P	100 (per bundle)	1-1/4" PIN & CLIP ASSEMBLY WITH 6' GALVANIZED WIRE
DHW1208P	100 (per bundle)	1-1/4" PIN & CLIP ASSEMBLY WITH 8' GALVANIZED WIRE
DHW1212P	100 (per bundle)	1-1/4" PIN & CLIP ASSEMBLY WITH 12' GALVANIZED WIRE
DHW1212	100 (per bundle)	12' x 12ga GALVANIZED HANGER WIRE

CUSTOM PRE-TIED WIRE AVAILABLE UPON REQUEST.



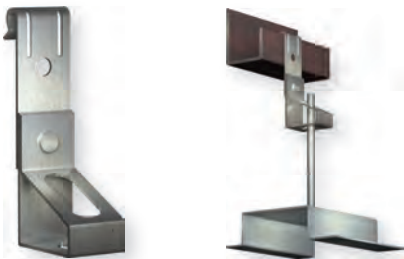
ACOUSTICAL HANGERS

VERTICAL FLANGE HANGER



- Suspends #12, #10, #9 or #8 wire, 1/4" or 3/8" plain or threaded rod from vertical flanges (FH).
- Suspends 1/4" or 3/8" threaded rod from vertical flanges 1/16" to 1/4" thick (RF).
- Static load capacity: 160 lbs. (RF).

PART NO.	PKG QTY	DESCRIPTION
FH116	100	1/16" TO 5/16" VERTICAL FLANGE
FH532	100	5/32" TO 1/4" VERTICAL FLANGE



- Suspends #12, #10, #9 or #8 wire, 1/4" or 3/8" plain or threaded rod from vertical flanges (FH).
- Suspends 1/4" or 3/8" threaded rod from vertical flanges 1/16" to 1/4" thick (RF).
- Static load capacity: 160lbs (RF).

PART NO.	PKG QTY	DESCRIPTION
RF53214T	100	5/32" TO 1/4" VERTICAL FLANGE FOR #8 WIRE OF 1/4" THREADED ROD

ANGLE FLANGE HANGER



- Fits 1/16" to 1/4" thick Z-Purlin (ABC25) or vertical flanges (VBC25).
- Accommodates tooling for floor installations.

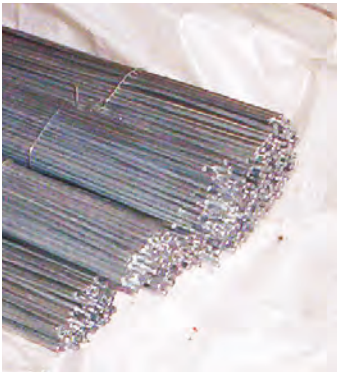
PART NO.	PKG QTY	DESCRIPTION
ABC25	100	1/16" TO 1/4" FOR ANGLED FLANGE FOR S-HOOKS, PERF. STRAP & WIRE
VBC25	100	1/16" - 1/4" THICK Z-PURLIN J-CLIP FOR VERTICAL FLANGE

WORKS WITH CADDY® VAFT OR RAMSET L1700 INSTALLATION TOOLS.



ACOUSTICAL WIRE

STRAIGHT CUT WIRE



- Straight cut 12 gauge soft galvanized wire.

CHECK WITH YOUR GRABBER LOCATION TO CONFIRM LENGTH AVAILABILITY.

PART NO.	SIZE	WEIGHT	DESCRIPTION
HW121250	12" X 12 GA	50-LBS	GAUGE HANGER WIRE STRAIGHT END CUT
HW121650	16' X 12 GA	50-LBS	GAUGE HANGER WIRE STRAIGHT END CUT

CUSTOM LENGTH WIRE AVAILABLE UPON REQUEST.



SPRING STEEL HANGERS

BEAM CLIP HANGER



- Installs with hammer on bulb tees and beams with static load capacity of 200lbs.
- Clearance for 1/4" bolt in tab.

PART NO.	PKG QTY	DESCRIPTION
SFC18	100	1/8" TO 1/4" FLANGE BEAM CLAMP
SFC516	100	5/16" TO 1/2" FLANGE BEAM CLAMP
SFC916	100	9/16" TO 3/4" FLANGE BEAM CLAMP

SELF-SEATING ACOUSTICAL TOGGLE

SPRINGSHOT™ SELF-SEATING ACOUSTICAL TOGGLE BOLT



The SpringShot Acoustical Toggle easily installs into various material thicknesses with little or no adjustment.

ADVANTAGES:

- Special spring design
- Self tightening & self-seating
- One-size-fits-all applications
- Helps eliminate migrating sounds
- Will not loosen under vibration
- Project designer preferred



WARNING: This product can expose you to chemicals including hexavalent chromium, which is known to the State of California to cause cancer and birth defects or other reproductive harm. For more information, go to www.P65Warnings.ca.gov.

PART NO.	DESCRIPTION
SFAST	1/4 X 5 SPRING TOGGLE, YELLOW ZINC, 100

US Patent # 5,702,218
US Patent # 5,898,987
Canadian Patent # 2,184,422

A NEW STANDARD IN ACOUSTICAL

There's a reason the SpringShot Acoustical Toggle is everyone's new favorite: it's so easy to use. The self-centering washer is a vast improvement over old-school acoustical toggles and the patented spring action provides continuous pressure. In short, the SpringShot makes correct installation a breeze, and you can trust it to keep your toggle fixed and secure, without loosening over time or due to vibration.

INSTALLATION IS A SIMPLE AS:

1. Prepare an opening as usual
2. Insert the toggle
3. Adjust if needed



WEDGE ANCHORS

TIE WIRE WEDGE ANCHOR



- For various overhead suspension applications. Meets or exceeds design criteria and varied installation requirements for overhead expansion applications.

Coating: Clear Zinc
302 Stainless
Expansion Clip

PART NO.	PKG QTY	DESCRIPTION
TW1400	100	5 LBS. - 1/4" X 2 1/8" TIE WIRE WEDGE ANCHOR

PERFORMANCE:

- Ultimate tension load 1908 lbx/SPALL 5500 PSI concrete.



WARNING: This product can expose you to chemicals including hexavalent chromium, which is known to the State of California to cause cancer and birth defects or other reproductive harm. For more information, go to www.P65Warnings.ca.gov.

ACOUSTICAL TOOLS AND PRODUCTS

BRIGHT TENSION PINS



- Tempered steel tension pins.
- Eight—Five pound pails per master carton.

PART NO.	BULK WEIGHT	DESCRIPTION
ATP	50 LBS.	1-1/8" BRIGHT TENSION NAILS
ATFP	N/A	1-1/8" BRIGHT TENSION NAILS

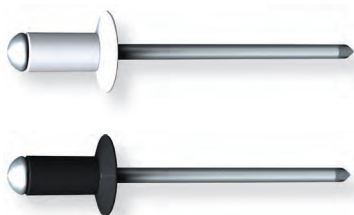
FENCE STAPLES



- Galvanized steel.
- Eight—Five pound pails per master carton.

PART NO.	BULK WEIGHT	DESCRIPTION
AFS112	50 LBS.	9 X 1 1/2" GALVANIZED FENCE STAPLES
AFS112FP	N/A	9 X 1 1/2" GALVANIZED FENCE STAPLES
AFS134	50 LBS.	9 X 1 3/4" GALVANIZED FENCE STAPLES
AFS134FP	N/A	9 X 1 3/4" GALVANIZED FENCE STAPLES

GRID MATCH RIVETS



- Grabber grid-match rivets are designed for suspended ceiling grid installations. #42 and #44 White or Black.
- Ten—1,000 count boxes per master carton.

	PART NO.	APPROX. PCS.	DESCRIPTION
WHITE	ARW42CP	1,000	#42 1/8-in dia POP RIVETS - WHITE
	ARW4210M	10,000	#42 1/8-in dia POP RIVETS - WHITE
	ARW44CP	1,000	#44 1/8-in dia POP RIVETS - WHITE
	ARW4410M	10,000	#44 1/8-in dia POP RIVETS - WHITE
BLACK	ARB42CP	1,000	#42 1/8-in dia POP RIVETS - BLACK
	ARB4210M	10,000	#42 1/8-in dia POP RIVETS - BLACK
	ARB44CP	1,000	#44 1/8-in dia POP RIVETS - BLACK
	ARB4410M	10,000	#44 1/8-in dia POP RIVETS - BLACK

RIVET DRILL BIT



- Double-ended split points.
- 12 per pack.

PART NO.	PKG QTY	DESCRIPTION
ARB1T	12	#30 DOUBLE ENDED SPLIT POINT DRILL BIT



ACOUSTICAL TOOLS AND PRODUCTS

KLICK-FAST RIVETER



PART NO.	DESCRIPTION
AHP2	HP-2 RIVET TOOL

- Heavy-duty model.
- Includes 4 nosepieces to set rivet diameters from 3/32" to 3/16".

SUR-PUNCH 45° GRID PUNCH PLIERS



PART NO.	DESCRIPTION
PUS01	45° ACOUSTIC CEILING GRID PUNCH PLIERS

- Punches a perfect 1/8" hole up to three layers of ceiling grid.
- 45° angled head.

1/8" GRID PUNCH PLIERS



PART NO.	DESCRIPTION
MT	1/8" ACOUSTIC CEILING GRID PUNCH PLIERS
MTK	1/8" ACOUSTIC CEILING GRID PUNCH PLIERS REPAIR KIT

- Ideal for 9/16" ceiling grid.
- Rubber handle ensures a comfortable and secure grip.
- Total length—9-1/2".

ACOUSTICAL TOOLS AND PRODUCTS

LEVER ACTION CEILING CLAMPS



- All metal construction with rubber inserts.
- Won't scratch painted surfaces.

PART NO.	PKG QTY	DESCRIPTION
CLR01	48	RUBBER TIPPED LEVER ACTION CEILING GRID CLAMP
BPGGC	4	4-IN RUBBER TIPPED LEVER ACTION CEILING GRID CLAMP

HEAVY DUTY SPRING CLAMPS



- Heavy-duty metal spring clamps.
- Available in 4" and 6" sizes.

PART NO.	PKG QTY	DESCRIPTION
CLS4H	12	4" HEAVY DUTY METAL SPRING CLAMP, RUBBER TIPPED
CLS6H	12	6" HEAVY DUTY METAL SPRING CLAMP, RUBBER TIPPED

FASTLINE CEILING GRID ALIGNMENT LINE



- Ceiling grid alignment line is available in 450 foot lengths.

PART NO.	DESCRIPTION
GJL450	450 FT ACOUSTIC CEILING GRID ALIGNMENT LINE

UTILITY KNIFE AND PREMIUM BLADES



- No screwdriver needed. Just twist, and the handle "clam shells" opens so you can flip the blade around or install a new one.
- Comes with FIVE extra sharp, extra long-lasting Grabber drywall blades.

PART NO.	PKG QTY	DESCRIPTION
GUKNIFE	1	HEAVY DUTY METAL UTILITY KNIFE
GUBLADE	100	PREMIUM UTILITY BLADES



- Extra sharp, extra long-lasting – 100 blades per box
- Lasts up to 3X longer
- .042-in High Carbon Steel



ACOUSTICAL INSTALLATION PRODUCTIVITY TOOLS

ARROW™ REVELCUT™ 2FT TILE CUTTING WORKSTATION



- Tile cutting workstation for 2ft. ceilings panels.
- Produces factory quality square edge, square tegular, and angled tegular panel edges.

PART NO.	PKG QTY	DESCRIPTION
RC200	EACH	ARROW REVELCUT 2FT. TILE CUTTING WORKSTATION, 2FT CEILING PANELS

ARROW REVELCUT 4FT TILE CUTTING WORKSTATION



- Tile cutting workstation for 4ft. ceilings panels.
- Produces factory quality square edge, square tegular, and angled tegular panel edges.

PART NO.	PKG QTY	DESCRIPTION
RC400	EACH	ARROW REVELCUT 4FT. TILE CUTTING WORKSTATION, 4FT CEILING PANELS

ARROW REVELCUT SIZING AND PROFILE BLADES FOR TILE CUTTING WORKSTATIONS



- Replacement profile blades. The short cutting blade which mounts to the profile cartridge and car and cuts the edge profile.
- Replacement sizing blades. The large cutting blade which mounts to the sizing cartridge and car and cuts tile to size.

PART NO.	PKG QTY	DESCRIPTION
RC310	10	ARROW REVELCUT SIZING BLADES, 10 PACK
RC320	20	ARROW REVELCUT SIZING BLADES, 20 PACK
RC330	10	ARROW REVELCUT PROFILE BLADES, 10 PACK
RC340	20	ARROW REVELCUT PROFILE BLADES, 20 PACK

THE RAMSET® VIPER 4



RAMSET® VIPER4 .27 CALIBER STRIP POWDER TOOL



The new Ramset Viper4 .27 Caliber Strip Powder Tool simplifies overhead applications with an internal load advance that allows a push/sleeve actuated operation. Compatible with the newly designed poles, the rear collar is connected by set-screw to avoid a manual tightness check.

Item No. VIPER4

Weight: 4.5 lbs.

Length: 17"

Maximum pin length: 1-1/2"

AUTOMATIC LOAD ADVANCE:

Load is advanced consistently each time the Viper is fired.

AUTOMATIC PISTON RETURN:

No time spent manually resetting or cycling the tool. Allows you to work faster.

OVERDRIVE PROTECTION:

Heavy duty buffer system prevents front end damage caused by piston overdrive—especially through sprayed-on insulation.

OPEN FRONT-END DESIGN:

Completely redesigned open-ended muzzle keeps your tool cleaner longer.

SIMPLIFIED BARREL RETENTION COLLAR:

No tools are required for assembly or disassembly.

PART NO.	SHANK IN	LENGTH MM	APPLICATION
14TRHSS10	1	25.4	THREADED ROD HANGER
38	1		THREADED ROD HANGER
SDC100	1		CEILING CLIP
SDC125	1-1/4	31.8	CEILING CLIP
SPC78	7/8		CEILING CLIP
SPC114	1-1/4	31.8	CEILING CLIP

ADVANTAGES:

- Automatic load advance
- Automatic piston return
- Overdrive protection
- Open front-end design
- Simplified barrel retention collar
- Stable steel collar
- Uses Viper pole system

SPECIFICATIONS:

- .27 Caliber strip tool
- Semi-Automatic
- Overdrive protection
- Open front-end design
- Simplified barrel retention collar
- Stable steel collar
- Uses Viper pole system

USES NEW VIPER POLE SYSTEM:

Works with three newly designed Ramset poles to make your job easier and faster. The Viper is triggered by new internal rods that are activated by pushing on the pole sleeve.

PART NO.	DESCRIPTION
V4-6	6' POLE
V4-8	8' POLE
V4-EXT	3' Extension (no trigger)



SCAFFOLDING

CONTRACTOR-GRADE SCAFFOLDING



Designed with your safety in mind, Grabber offers a complete line of high-quality Step, Ladder and Open-end style Steel Frames. All frames are powder-coated for extended durability and warrantied to meet or exceed OSHA and ANSI specifications.

- 1,000 lb maximum capacity
- High-strength structural steel tubing
- Powder-coated with high UV finish
- Compatible with major scaffold brands
- Meets OSHA safety requirements
- Available in 4', 6' and 8' lengths

PART NO.	DESCRIPTION
GS4	4' H X 6' L W/OVER CENTER LOCKING CASTERS
GS4NC	4' H X 6' L W/OUT CASTERS
GS6	6' H X 6' L W/OVER CENTER LOCKING CASTERS
GS8	6' H X 6' L W/OVER CENTER LOCKING CASTERS
GUC5	5" ULTIMATE CASTER
893	20" OUTRIGGER

ULTIMATE CASTER:
5" swivel casters with lock to prevent both rolling and swiveling when in use. Comes with snap pin to fasten the caster to the unit.



POSITION LOCK:
User friendly squeeze lock with thumb locking wheel. Additional snap pin provides a dual-locked scaffold system.



POSITION LOCK:
Outrigger includes: 2 — snap pins
1 — thumb screw (5" caster sold seperately)



ACOUSTICAL SEALANT

ACOUSTICAL SOUND AND SMOKE SEALANT



Non-flammable, water-based product developed specifically for the reduction of sound transmission in all types of wall partition systems. Easy application and easy cleanup. Used correctly and as directed, sealant will achieve and maintain specific STC (Sound Transmission Class) values specified for various wall system designs. This product should be used in office buildings, sound studios, hospitals, schools, hotels and motels, apartment complexes, and other areas where sound ratings are required. This sealant is also ideal for sealing out air infiltration and unwanted moisture in residential construction.

PART NO.	DESCRIPTION
GS-CSF	ACOUSTICAL SMOKE AND SOUND SEALANT


- Easy application and easy cleanup
- UL tested and classified
- Low VOC green certified product
- Non-hardening, non-staining & non-migrating.
- Maintains flexible seal against air-borne sound, air infiltration and moisture.





SCAFFOLDING

MINI SCAFFOLD WITH 5" LOCKING CASTERS




HAND HOLD BAR

HEAVY-DUTY ADJUSTABLE PLATFORMS

5" LOCKING CASTERS

PART NO.	DESCRIPTION
GSU4	MINI SCAFFOLD WITH LOCKING CASTERS




FOLDS DOWN FLAT TO 4"

Grabber's Mini Scaffold includes heavy duty 5" swivel casters with center lock to prevent both rolling and swiveling when in use. Threaded snap pins fasten the casters to the scaffold.

- 1,000 lb maximum capacity
 - 21" wide x 52" high x 44" long
 - Fold down flat (4")
 - Twin steel platforms
- Holds up to 500 lbs.
 - Big 5" locking swivel casters
 - Hand hold bar

SAW HORSES

FOLD N GO



Fold N Go saw horses are light-weight and easy to pack up and store. Made with solid steel and durable hard wood top support for maximum strength.

- Sturdy, lightweight structure
- 22.5 lbs shipping weight per pair
- Folds for easy storage
- OSHA certified compliance

PART NO.	DESCRIPTION
FNG	FOLD N GO SAW HORSES

- 1,600 lbs weight-bearing capacity per pair
- Wide, 36" working width
- Durable rubber-capped feet

All Grabber scaffolds, sawhorses, drywall carts, and benches meet or exceed requirements of ANSI Code A10.8
Read and follow O.S.H.A. codes and regulations.

PRECISION LASERS

20V MAX GREEN ROTARY TOUGH LASER



Item No. DW080LGS

With an IP67 debris/water resistance, 2-meter drop protection, as well as a highly-visible green beam, The DEWALT. 20V MAX* Green Beam Rotary Tough is engineered for use in adverse conditions.



- Accuracy of 1/16 in. At 100 ft.
- Connect to the DEWALT tool connect™ app via Bluetooth; technology. Features include tool tracking, bump notifications, fall and drop indications, and changes in slope and line direction.
- 2000 ft. Range.
- Dual Axis slope mode for added functionality.

12V BEAM BATTERY, GREEN LASER



Item No. DW089LG

The DW089LG 12V MAX* Green 3x360 Laser features a 12V MAX* Lithium-ion rechargeable power tool battery platform and green beam laser technology. Over-molded housing and IP65 are debris and water resistant.



- Three 360 degree line lasers.
- Green beam laser technology which is four times brighter than red.
- Integrated magnetic bracket allows for flush attachment to metal track and steel. Suitable for indoor visibility range is 100 feet. Working range is 165 feet
- Part of the 12V lithium ion rechargeable power tool battery platform.
- Other brands and styles of lasers available.



GRABBER® GAS TRACK SYSTEMS

GTT150 TRACK TOOL



The lightweight, high-performance GTT150 lets you attach track to concrete and steel or Plywood to concrete or block. You can also attach lath or furring strips to concrete or block application. The lithium-ion battery delivers 8,000 shots per charge – nearly 3x more than competing systems. Advanced fuel cell technology provides an unprecedented 4-year shelf life, compared to 1 year for most other competing systems.

PART NO.	DESCRIPTION
GTT150	GRABBER TRACK TOOL

- Depth-of-drive adjustment 1/2-inch to 1-1/12-inch pin capacity
- Quick release 40-pin magazine
- 1-hour battery recharge time
- Gas or battery powered
- No license required for use
- Lath adapter available

GTT150HD TRACK TOOL



The lightweight, high-performance GTT150 lets you attach track to hard concrete and steel or Plywood to concrete or block. You can also attach lath or furring strips to concrete or block application. The lithium-ion battery delivers 8,000 shots per charge – nearly 3x more than competing systems. Advanced fuel cell technology provides an unprecedented 4-year shelf life, compared to 1 year for most other competing systems.

PART NO.	DESCRIPTION
GTT150HD	GRABBER TRACK TOOL

- Depth-of-drive adjustment 1/2-inch to 1-1/12-inch pin capacity
- Quick release 40-pin magazine
- 1-hour battery recharge time
- Gas and battery powered
- No license required for use
- Lath adapter available



GRABBER® GAS TRACK SYSTEMS

GTT PINS



PART NO.	DESCRIPTION
GTT P012	.102 - .120 X 1/2-IN STEP SHANK ZINC STEEL PIN
GTT P034	.102 X 3/4-IN SMOOTH SHANK ZINC PIN
GTT PFP034	.102 - .120 X 3/4-IN STEP SHANK ZINC PIN
GTT P100	.102 X 1-IN SMOOTH SHANK ZINC PIN
GTT P114	.102 X 1-1/4-IN SMOOTH SHANK ZINC PIN
GTT P112	.102 X 1-1/2-IN SMOOTH SHANK ZINC PIN

LATH MAGNETIC ADAPTERS AND WASHERS



PART NO.	DESCRIPTION
GTT LDW	1-IN LATH DISC WASHER (1M PER BOX, 5M PER CASE)
GTT LA	MAGNETIC LATH WASHER ADAPTER FOR GTT150

FUEL CELL



PART NO.	DESCRIPTION
GTT FUEL	GAS FUEL CELL FOR GTT150 AND GTT150HD (CASE OF 12)

RAMSET® ELECTRONIC FUEL INJECTION



RAMSET® T4MAG



T4MAG (COMMON FASTENERS)

ACCESSORIES:

T4FUEL FUEL CELL
18581 BATTERY

PART NO.	DESCRIPTION
SPC78	RAMSET TRACK TOOL

ADVANTAGES:

- Higher stick rate (.125 diameter pin)
- 30% more power
- Easy push-down force
- Deep leg track capable
- 45 pin magazine capacity
- Newly designed fitted dust shield
- Battery charger provides constant charging even with voltage drops.
- ICC approved (ESR -1955)

SPECIFICATIONS:

- Weight: 9.2 lbs
- Height: 15-in, Length: 18-1/2-in, Width: 4.3-in
- Fuel cell design: One step insert and click
- 45 pin magazine capacity
- Fastener assembly: 15 pin (strip)
- Fastener length capability: 0.5 – 1.0-in
- Fastener pin diameter: .125-in
- Fuel cell capacity: Over 100 shots
- Shots per battery charge: 3000 (approx.)

SHANK IN	LENGTH MM	APPLICATION	ITEM NO.
1/2-in STEEL PIN W/ T4 FUEL	1000	5 BOXES (5000)	T4012
1/2-in PREMIUM PIN W/ T4 FUEL	1000	5 BOXES (5000)	T4012S
3/4-in CONCRETE PIN W/T4 FUEL	1000	5 BOXES (5000)	T4034B
3/4-in PREMIUM PIN W/T4 FUEL	1000	5 BOXES (5000)	T4034S
1-in CONCRETE PIN W/T4 FUEL	1000	5 BOXES (5000)	T4100

RAMSET® TRAKFAST



TF1200 (COMMON FASTENERS)

ACCESSORIES:

TFUEL FUEL CELL
B0092 BATTERY

PART NO.	DESCRIPTION
TF1200	RAMSET TRACK TOOL

ADVANTAGES:

- Increased durability and reliability
- Off position to prevent battery drainage
- Three to five times faster than powder tools
- 42 pin magazine
- Piston automatically resets, no recoil
- No licensing required
- No changing loads
- Narrow nose & profile
- 2 year warranty (6 months on wearable parts)

SPECIFICATIONS:

- Gas technology
- Fully automatic
- 1-1/2-in pin capacity
- 42 pin magazine capacity
- Height: 15-in, Length: 17.5-in
- Weight: 8.3-lbs.
- Maximum cycles per second: 2
- Fuel cell: 1000 shots
- Battery (charged): 3000 shots

SHANK IN	LENGTH MM	APPLICATION	ITEM NO.
1/2-in		PIN	FPP012
1/2-in	12.7-mm	STEP DOWN PIN	FPP012S
3/4-in	19.1-mm	BLACK PIN	FPP034B
3/4-in		STEP DOWN PIN	FPP034S
1-in		PIN CLEAR ZINC COLLATED	FPP100
1-1/4-in		PIN CLEAR ZINC COLLATED	FPP114

SHANK IN	LENGTH MM	APPLICATION	ITEM NO.
3/4-in		PIN BREAKAWAY STRIP	FPP034T
1-in		PIN	FPP100T
1-1/2-in		PIN	FPP112T
1-3/4-in		PIN	FPP114T



TILT TRUCKS

TILT TRUCK



As a single seamless container made from high-density plastic, Grabber’s Tilt Truck is built to handle every job. The patented reinforced handle and rear axle prevent cracks and sagging, no matter the load. Engineered with maneuverability in mind, the truck offers a smooth 360-degree spin, large rear rubber-coated wheels to traverse rough terrain, and a patented multi-rib handle for the best grip possible.

- 1,000-pound load; ¾ yard of debris capacity
- Stackable design saves space
- Fits through standard doorways and elevators
- Quick and easy assembly
- Dumping can be performed by a single user
- Easy-to-clean hard plastic



PART NO.	DESCRIPTION
GDCF34	3/4 CUBIC YARD DUMP CART WITH 12-IN WHEELS. 1000-LBS CAPACITY
GDCL34	LID - EXPANDS CART TO 1-YD CAPACITY
GDCF12	1/2 CUBIC YARD DUMP CART WITH 12-IN WHEELS. 1000-LBS CAPACITY
GDCW12	REPLACEMENT 12-IN WHEEL
GDCC5	REPLACEMENT 5-IN STEERING CASTER
GDCA19	REPLACEMENT AXLE



SPECIFICATIONS AND DATA

COATINGS AND FINISHES

CLEAR ZINC

Salt spray results ASTM B117 minimum 12 hr, no red rust

Recommended for interior applications and for exterior applications where the fastener will be encapsulated, i.e. attachment of lathing prior to application of stucco.

YELLOW ZINC

Salt spray results ASTM B117 minimum 24 hr, no red rust

Recommended for interior applications and for exterior applications where the fastener will be encapsulated, i.e. attachment of lathing prior to application of stucco.

SPECIFICATIONS

Due to variations in wood density, softness of hanging wire and unknown condition of existing overhead, accurate pullout loads cannot be determined without actual on-site testing. With full thread engagement of lags and four twist of soft wire, approximately 400 pounds of working load can be achieved. Ultimate tensile strength on bolt portion of toggle is 870 pounds. A safety factor of 10 to 1 should be applied to determine design load of overhead fastening applications.

PART NO.	SPRING STEEL FASTENERS	ULTIMATE STATIC LOAD
L1801	PERLIN HANGER	270 LBS. WORKING LOAD
R014	OFFSET BRACKET	160 LBS.
RA14	ANGLE BRACKET	160 LBS.
R1814	BEAM CLIP	160 LBS.
RS1614	BEAM CLIP	200 LBS.
RS154	BEAM CLIP	200 LBS.
R91614	BEAM CLIP	200 LBS.
BA416H1	SIGN HANGER	40 LBS.
A2H	ANGLE CLIP	200 LBS.
SFC SERIES	BEAM CLIP ASSEMBLY	160 LBS.
*FC SERIES	BEAM CLIP ASSEMBLY	160 LBS.

*The FC series is accepted by the city of NY, Dept. of BLDG. MEA 383-91-M

DECK LAGS SHARP POINT - ULTIMATE TENSION

22 GA.	WOOD (0.46 SPECIFIC GRAVITY)
180 lbs.	245 lbs.

Full thread engagement for maximum pullout in wood.

ANGLE CLIP ASSEMBLY

3000 psi Concrete	4000 psi Concrete
-------------------	-------------------

2-HOLE ANGLE:

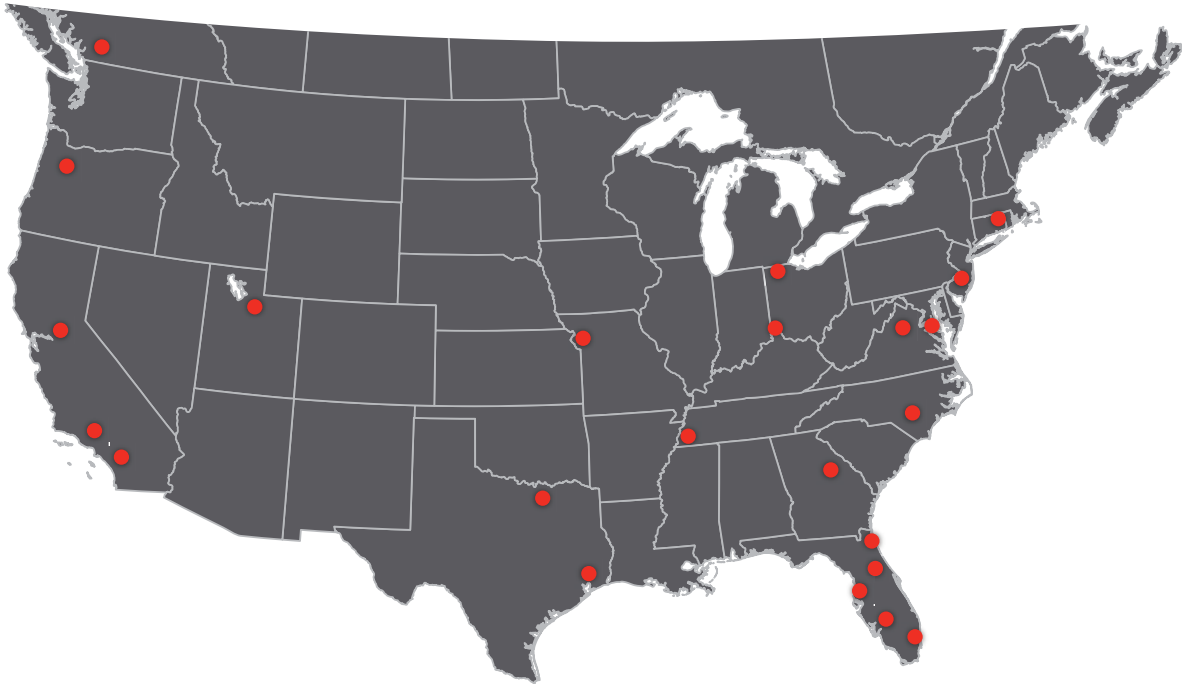
- ZINC ASTM B 633
- A safety factor of 3 to 1 should be applied to ultimate static load to determine design load.

TIE-WIRE SPIKE ULTIMATE PULLOUT LOAD:

Ultimate load capacities are based on testing in 2000, 3000, 4000 and 5000 PSI concrete. Specifications and data for pullout, shear, tensile strength etc. is available.

Fasteners shown in this catalog are not guaranteed as to suitability for specific purposes. Published values contained within this catalog are the results of independent testing. Holding power depends on the quality of the material being fastened. These published values are to serve as a guideline only and are not a guaranteed in any way, written or verbal by Grabber Construction Products Inc. or any of its distributors. All figures indicated are average values, however, reference should always be made to applicable building codes for the specific safe working loads.

GRABBER BRANCH LOCATIONS



WEST REGION

Grabber San Diego
858.292.6022
9466 Chesapeake Drive
San Diego CA 92123-1353

Grabber Salt Lake
801.266.4151
4273 South 590 West
Murray UT 84123-3615

Grabber Portland
503.467.5001
15031 NE Airport Way Ste 300
Portland OR 97230-8333

Grabber L.A.
562.696.5122
8319 Allport Ave
Santa Fe Springs CA 90670-2107

Grabber NorCal
925.687.6606
2241 Carion Court
Pittsburg CA 94565-4029

CENTRAL REGION

Grabber Memphis
662.895.9300
6045 E Shelby Drive Ste 1
Memphis TN 38141-7601

Grabber Dallas
972.470.9044
10990 Petal Street Ste 400
Dallas TX 75238-2487

Grabber Houston
713.545.6424
2121 Britmoore Road Ste 1600
Houston TX 77043-2230

Grabber Cincinnati
513.874.9027
4325 Mulhauser Road Ste 8
Fairfield OH 45014-2266

Grabber Maumee
419.794.8212
370 W Dussel Drive Ste 5
Maumee OH 43537-1604

Grabber Kansas City
816.931.8816
805 Liberty Street
Kansas City MO 64102-1009

NORTHEAST REGION

Grabber DC
301.808.5100
850 B Hampton Park Blvd
Capitol Heights MD 20743-4917

Grabber New England
860.623.3600
120 Newberry Road
East Windsor CT 06088-9544

Grabber Jersey
856.662.2525
1125 Thomas Busch Memorial Hwy
Pennsauken NJ 08110-2310

Grabber Virginia
703.631.8770
14801 Willard Road Ste 700
Chantilly VA 20151-3719

SOUTHEAST REGION

Grabber Conover
828.267.6245
1136 Industrial Dr SW
Conover NC 28613-2753

Grabber Ft. Myers
239.278.1888
12570 Metro Pkwy
Fort Myers FL 33966-8356

Grabber Tampa
813.249.2281
5106 W Hanna Ave
Tampa, FL 33634

Grabber Pompano
954.971.4730
1857 SW 3rd Street
Pompano FL 33069-3105

Grabber Orlando
407.297.7278
3714 Silver Star Road
Orlando FL 32808-6605

Grabber Jacksonville
904.739.2760
5913 Saint Augustine Rd Ste 7
Jacksonville FL 32207-8000

Grabber Atlanta
770.813.1332
2605 N Berkeley Lake Rd NW
Ste 500
Duluth GA 30096-3099

CANADA

Vancouver, BC
604.856.1444
#1, 5563 - 268th Street
Langley, British Columbia V4W 3W1



REFERENCES AND ASSOCIATED STANDARDS

ASTM B117, Standard Practice for Operating Salt Spray (Fog) Apparatus, ASTM International, West Conshohocken, PA. www.astm.org.

ASTM B633, Standard Specification for Electrodeposited Coatings of Zinc on Iron and Steel, ASTM International, West Conshohocken, PA. www.astm.org.

ASTM C636, Standard Practice for Installation of Metal Ceiling Suspension Systems for Acoustical Tile and Lay-In Panels, ASTM International, West Conshohocken, PA. www.astm.org.

ASTM E580, Standard Practice for Installation of Ceiling Suspension Systems for Acoustical Tile and Lay-in Panels in Areas Subject to Earthquake Ground Motions, West Conshohocken, PA. www.astm.org.

Grabber has you covered with more than just great fastening products

In short, Grabber is here to help you build a better product and make you more money. Through constant innovation, Grabber helps you do every job faster, better, and safer – with the industry's best, most technologically advanced products.



**DRYWALL SCREWS
METAL FRAMING SCREWS
DIRECT FASTENING
PNEUMATIC NAILS**

FASTEN IT

Grabber invented the drywall screw and changed an entire industry – but we didn't stop there. From drywall screws to heavy gauge framing screws, Grabber has a fastener for just about everything.



**SUPERDRIVE
SCREW GUNS
CHOP SAWS
LASERS**

DRIVE IT

Grabber's SuperDrive tool makes driving screws faster and more accurate than ever. Beyond SuperDrive, Grabber offers other tools that make your job easier including chop saws, routers, lasers and more.



**SUBFLOOR ADHESIVES
DRYWALL ADHESIVES
ACOUSTICAL SEALANTS
FIRESTOPPING CAULKS**

CAULK IT

For all your caulk projects, trust Grabber's complete line of caulks, including sound control sealants, subfloor adhesives, drywall adhesives, insulation foam and more. We also offer EFC and IFC firestopping caulks.



**CERTAINTEED® CORNERS
STRAIT-FLEX® CORNERS
DRYWALL TAPE
FINISHING TOOLS**

FINISH IT

Finishing never came faster than with Grabber drywall products. From fiberglass mesh tape to spark perforated drywall tape to the innovative No-Coat® structural drywall system, Grabber has what you need to do the job right.



**PANELMAX® MACHINES
ST-48
FT-30
CNC
CM10P**

PRE-FAB IT

PanelMax is a revolutionary system that makes creating intricate shapes and assemblies from drywall much more affordable. Now even the most challenging assemblies can be completed more efficiently with less finishing, less labor and fewer materials.

Discover the Grabber Difference

Grabber products are trusted to perform at the highest levels so you can do more, better. Since 1967, contractors have relied on the quality, value, consistency and performance of Grabber products, box after box. In a post-pandemic environment, you can count on Grabber to start boosting your productivity and profitability even before you reach the jobsite with easy purchasing options and valuable advice.

Visit www.grabberpro.com or call 800-477-8876 to find a dealer near you.



Learn more at GrabberPro.com.

©2023 GRABBER CONSTRUCTION PRODUCTS. ALL RIGHTS RESERVED. | PG1003/10-23 | PRINTED IN U.S.A

The trademarks GRABBER, PANELMAX, are trademarks of Grabber Construction Products, Inc.

CertainTeed and No-Coat are trademarks of CertainTeed. RevealCut is a trademark of Arrow Fastener Company, LLC. Ramset is a trademark of Illinois Tool Works, Inc. Strait-Flex is a trademark of Clarkwestern Dietrich Building Systems LLC.



Technical information contained herein is furnished without charge or obligation and is given and accepted at the recipient's sole risk. Because conditions of use may vary and are beyond our control, Grabber Construction Products makes no representation about, and is not responsible or liable for, the accuracy or reliability of data associated with uses of any product described herein. Grabber Construction Products reserves the right to modify this document without prior notice.