

**Perfect arches every time  
in minutes, not hours**



**Perfect for doors, windows,  
ceiling treatments, barrel vaults . . .  
and more!**

- ◊ 100% round arches every time
- ◊ You save time and money
- ◊ Interior or exterior
- ◊ As easy as 1-2-3
- ◊ Maintenance-free polymer
- ◊ Waterproof, easy to cut
- ◊ Uniform, durable, workable



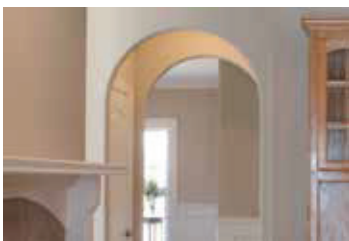
**Doors, windows, ceilings . . . whatever you use Arch-It for, you save time and money**

### **Doorways**

Arched doorways add a great deal of panache to just about any style of home. And now they're available at lower cost, for increased profitability.

#### **Opening's a little too small?**

If need be, the top ends can be overlapped or sawed off. If the opening is a little wide, the top ends can be separated by up to a few inches, and the finished arch will look perfectly round. The result: the ultimate in flexibility for you, no matter what size openings the plans call for.



### **Barrel vaults, alcoves and more**

Once you get used to how easy it is to use Arch-It, all kinds of possibilities open up. Alcoves (such as the one at left) and similar architectural treatments suddenly become a whole lot easier and more cost-effective.

#### **Let your mind roam . . .**

Take a look at the double arches in the doorway at left. How would that opening look with a barrel vault? With Arch-It, you'd be astonished how easy it can be.

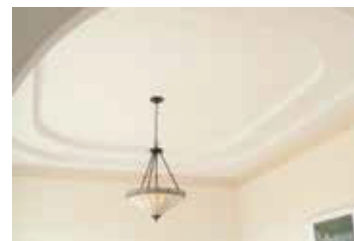


### **Ceiling treatments**

Some of the really good looking ceilings called for in many upscale homes can be difficult and time-consuming to create from scratch. Use Arch-It to get exactly the look you want — and at a fraction of the cost.

#### **Just turn 90°**

For a moment it doesn't appear that ceilings and doorways have very much in common. But once you've framed in a drop ceiling, you'll find it's as easy to use Arch-It sideways, to create a perfect curve in a ceiling, as it is to create a perfect doorway or window opening.



### **Windows**

Interiors, exteriors — for a window with a distinctive arch at the top, there's no quicker, easier or more attractive way to get the job done than with Arch-It.

#### **Wide range of sizes**

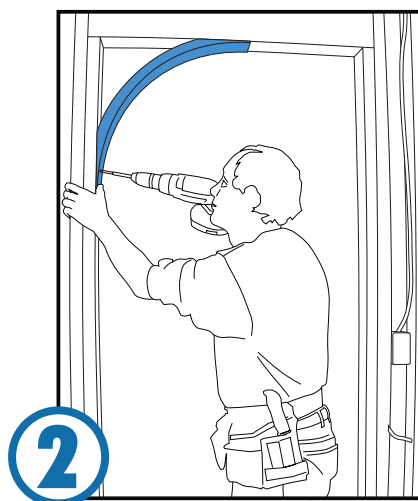
just about any size you need can be accommodated. We're adding new sizes all the time, and custom orders are available too. Call for details.



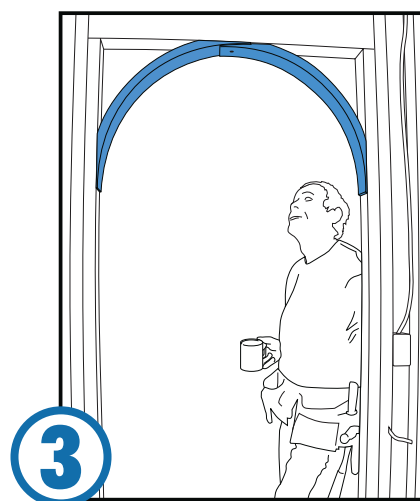
# With Arch-It perfect arches are as easy as 1-2-3



Frame in opening in the usual way, then measure down half the width of the arch.



Line up arch segments and screw them in place.



That's it — you're done. . .

**Go do another one!**

## Arch-It has a solution for nearly every opening

### Arch-It Sizing Chart

Item Number	Description	Application
ARCHA26	ARCH, 2'6" HALF ROUND	FOR 26-32" ROUGH OPENING
ARCHA30	ARCH, 3' HALF ROUND	FOR 32-38" ROUGH OPENING
ARCHA40	ARCH, 4' HALF ROUND	FOR 42-50" ROUGH OPENING
ARCHA50	ARCH, 5' HALF ROUND	FOR 52-62" ROUGH OPENING
ARCHA60	ARCH, 6' HALF ROUND	FOR 64-72" ROUGH OPENING
ARCHA80	ARCH, 8' HALF ROUND	FOR 88-99" ROUGH OPENING
ARCHB30	ARCH, 3' EYE-BROW	FOR 30-44" ROUGH OPENING
ARCHB40	ARCH, 4' EYE-BROW	FOR 44-53" ROUGH OPENING
ARCHB50	ARCH, 5' EYE-BROW	FOR 53-67" ROUGH OPENING
ARCHB60	ARCH, 6' EYE-BROW	FOR 67-77" ROUGH OPENING
ARCHB70	ARCH, 7' EYE-BROW	FOR 77-89" ROUGH OPENING
ARCHB80	ARCH, 8' EYE-BROW	FOR 89-101" ROUGH OPENING

